



APRIL 2011

“Green Edition”

COUNTY OF LOS ANGELES

## National Geographic Names Descanso Gardens One of the Top Ten Gardens in the World

Los Angeles County’s very own Descanso Gardens has been named one of the top ten gardens of the world in National Geographic’s *The 10 Best of Everything* book. Descanso Gardens is one of only two gardens located in the United States. National Geographic calls Descanso Gardens a “bucolic paradise.”



Descanso Gardens is located at 1418 Descanso Drive, La Cañada Flintridge 91011, near the intersection of the 210 and 2 freeways.

For hours, directions and amenities, please visit the Descanso Gardens’ website at <http://www.descansogardens.org/>. For additional information regarding the National Geographic Top 10 Gardens of the World, please visit <http://travel.nationalgeographic.com/travel/top-10/gardens/#page=1>.



## Los Angeles County is Going Green

Los Angeles County is at the forefront of the green movement. In 2008, the Board of Supervisors passed a landmark green building plan which is described as the most far-reaching package of its kind in California and maybe even the nation. The ordinances addressed low-impact development, green building and drought-tolerant landscaping. The County also adopted an ordinance requiring the reduction of plastic bags by retailers and supermarkets in unincorporated areas. The County has implemented its own green projects—big and small. In order to award these projects, the County established and awarded its first Green Leadership Award. One project is capturing storm water, filtering it and then using it to recharge the ground water supply instead of diverting it into storm drains and sending it to the ocean. Efforts have been made to improve the appearance of open space with native vegetation, streambeds and pathways. Other green projects include: purchasing hybrid, electric and cleaner-burning vehicles and equipment; retrofitting equipment and vehicles to reduce emissions; providing reserved parking and recharging stations for electric vehicles; installing synthetic grass; using recycled rubber foam on playgrounds; using energy-efficient lighting; and incorporating green designs into new construction. Also, placing paper, plastic and can recycling bins in county offices; eliminating use of plastic bags; encouraging employees and the public to use kiosks, computers and the Internet to eliminate paper; educating children and the community about the environment; and awarding grants to low-income homeowners to install devices to reduce energy use.



Upcoming Events.....	2-3
Trail Dusters Ride.....	4
LA County Employees Give Back.....	6
County of L.A. Commuter Benefit Program.....	8-9

### HIGHLIGHTS Volume 43 Issue 4

Women’s Voices, Women’s Accomplishments.....	10
LA County Fire Stations are Safe Houses for Kids.....	11
Departments Partner for Sharps Disposal.....	13
Retirees.....	14-15

# EVENT CALENDAR

**John Anson Ford Theatres**  
[www.fordtheatres.org](http://www.fordtheatres.org)

**April 29** - The Airborne Toxic Event *featuring the Calder Quartet*  
**May 4-5** - Chris Cornell *Songbook Volume 1*  
**May 21** - Experience World Music with Element Band

## June

### **4 - Which-a-way?**

*Presented by: Culture Shock Los Angeles Dance Troupe*

### **5 - Concierto Charanga**

*Presented by: Star Entertainment & Education Group*

### **10- A Summer Night in Korea: Film, Music, Food and More**

*Presented by: Korean Cultural Center, Los Angeles*

### **17 - Acoustic 5**

*Presented by: Kollaboration*

### **18 - Jazzmopolitan: Filipina Ladies of Jazz**

*Presented by: PAE Live!*

### **19 - 18th Annual Brazilian Summer Festival 2011**

*Presented by: Brazilian Nites Productions*

### **20 - J.A.M. Sessions Bollywood into the Night**

### **22-25 - Los Angeles Film Festival**

*Presented by: Film Independent*

### **27 - J.A.M. Sessions West Coast Swing**

### **Los Angeles County Arboretum & Botanic Garden**

**301 N. Baldwin Avenue, Arcadia 91007**

For a list of seminars, workshops and classes, please visit

[www.arboretum.org](http://www.arboretum.org) or call (626) 821-4623

### **Los Angeles County Museum of Art**

**5905 Wilshire Boulevard, Los Angeles 90036**

(323) 857-6000

[www.lacma.org](http://www.lacma.org)

## Art

**Through July 24** - David Smith: Cubes and Anarchy

**May 8 - July 31** - The Mourners: Tomb Sculptures from the Court of Burgundy

**May 29** - October 31 - Tim Burton

## Music

Sundays Live – Every Sunday at 6 p.m.

For more information on LACMA's Music Programs, please call (323) 857-6115

### **Music Center**

**135 N. Grand Avenue, Los Angeles 90012**

(213) 972-7211

[www.musiccenter.org](http://www.musiccenter.org)

### **Walt Disney Concert Hall**

[www.musiccenter.org](http://www.musiccenter.org)

### **Los Angeles Philharmonic**

[www.laphil.com](http://www.laphil.com)

(323) 850-2000

Visit <http://dhr.lacounty.info>  
for information on employment  
opportunities with the  
County of Los Angeles



### **Members of the Board**

#### **Michael D. Antonovich**

Mayor  
Fifth District

#### **Gloria Molina**

First District

#### **Mark Ridley-Thomas**

Second District

#### **Zev Yaroslavsky**

Third District

#### **Don Knabe**

Fourth District

---

**Lisa M. Garrett**  
Director of Personnel

**Carla D. Williams**  
Ombudsman/  
Community Liaison

**John S. Mina**  
Managing Editor

**Martina Abgaryan**  
Editor-in-Chief

## *County* DIGEST

County DIGEST Editorial Offices  
Department of Human Resources  
500 West Temple Street, Suite 555  
Los Angeles, CA 90012  
(213) 893-7810

[CountyDIGEST@hr.lacounty.gov](mailto:CountyDIGEST@hr.lacounty.gov)

Submissions to the DIGEST  
may be edited or otherwise altered for clarity.

Check out the DIGEST at  
<http://dhrdcap.co.la.ca.us/jic/digest/>

# Events

## LA Plaza de Cultura y Artes Inaugural Gala

Movie stars and civic glitterati turned out by the hundreds for the LA Plaza de Cultura y Artes Inaugural Gala in downtown Los Angeles. The event offered attendees a sneak peek at the museum displays and grounds. It also gave them the opportunity to hear Supervisor Gloria Molina explain why creating a museum dedicated to the founding of the City of Los Angeles—as well as the contributions of Mexicans and Mexican-Americans—was so important to her. Eva Longoria, a member of the LA Plaza Board of Directors, served as the gala's honorary chair. Featured entertainers included Julieta Venegas, Ceci Bastida, John Kun and La Santa Cecilia.



LA Plaza de Cultura y Artes (pictured), which opened to the public on Saturday, April 16, is located within the historic Vickrey-Brunswig building adjacent to Olvera Street within El Pueblo de Los Angeles Historic Monument. Though Los Angeles is known as a region of the future, it also has a rich history—and until the creation of LA Plaza de Cultura y Artes, no L.A. County venue existed to recognize, celebrate, or honor the city's Mexican roots.

In addition to exhibition galleries and a family genealogy center, LA Plaza will offer numerous education and arts programs designed to enlighten the public on Mexican-American culture as well as the broad talent of established—and up-and-coming—Mexican-American artists. LA Plaza de Cultura y Artes is located at 501 N. Main St. in downtown L.A. For more information, call (888) 488-8083 or go to [www.lapca.org](http://www.lapca.org).



Supervisor Gloria Molina (second from left), is pictured with from left to right, Antonia Hernandez, president and CEO of the California Community Foundation; actress Eva Longoria; Miguel Angel Corzo, president and CEO of LA Plaza de Cultura y Artes and Dolores Huerta, co-founder of the United Farm Workers.

### April

- 29-May 1 - Van Zweden Conducts Prokofiev and Beethoven
- 30 - Toyota Symphonies for Youth: The Hero Composer

### May

- 5-6 - Dudamel conducts Brahms and Golijov
- 7 - The Songs of Patsy Cline with special guests, The Living Sisters: Inara George, Eleni Mandell, Becky Stark
- 8 - Dudamel conducts Brahms and Golijov
- 8 - Organ Recital: Cameron Carpenter
- 10 - Baroque Variations: The Route of New Mexico
- 12-15 - Dudamel conducts Mackey and Brahms
- 19-22 - Dudamel conducts Brahms' Second
- 22 - Los Angeles Master Chorale: Ellington: Best of the Sacred Concerts
- 24 - Green Umbrella with John Adams
- 26-29 - Dudamel conducts Brahms' Third
- 29 - University of Michigan Symphony Band
- 31 - Chamber Music: Brahms Unbound

### Center Theatre Group

[www.centertheatre.org](http://www.centertheatre.org)

### Ahmanson Theatre

Through May 29 - God of Carnage  
June 14 - July 31 - Les Misérables

### Mark Taper Forum

Through May 1 - Burn This

### Kirk Douglas Theatre

Through May 1 - The Cripple of Inishmaan  
May 17-29 - Juan and John

### Los Angeles Opera

(performances in the Dorothy Chandler Pavilion)  
[www.losangelesopera.com](http://www.losangelesopera.com)  
September 17 - October 9 - Tchaikovsky's Eugene Onegin

### Los Angeles Master Chorale

[www.lamc.org](http://www.lamc.org)

### Natural History Museum

900 Exposition Boulevard, Los Angeles 90007  
For a list of events, please visit [www.nhm.org](http://www.nhm.org) or call (213) 763-DINO

April 30 - March of Dimes March for Babies  
Exposition Park  
W. 39th Street & S. Figueroa Street



March of Dimes  
Saving babies, together

**WeTip WELFARE FRAUD**  
**1 (800) 87-FRAUD**



Los Angeles County Department of Parks & Recreation and  
**LOS ANGELES COUNTY MAYOR**  
 MICHAEL D.  
**ANTONOVICH**  
 INVITES YOU TO THE  
*Trail Riders Ride*

**CASTAIC LAKE**  
 STATE RECREATION AREA

**SUNDAY, MAY 1, 2011**

*Activities:* Check in and pancake breakfast at 7:00 a.m. The event will kick off at Castaic Lake at 9:00 a.m. and continue through the scenic trails of Castaic Lake State Recreation Area. The day will conclude with a traditional barbecue and live country western music.

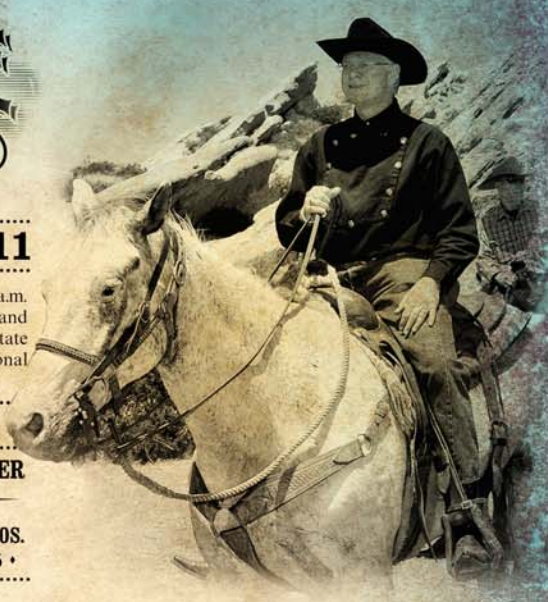
\$30 per person (horse rental not included)

**FOR MORE INFORMATION AND TO REGISTER**

CALL: (909) 599-8411

**FOR HORSE RENTAL RESERVATIONS: GRAHAM BROS.**

CALL LEE GRAHAM (760) 245-7695



*Special Recognition: Newhall Trail Riders & Los Angeles County Sheriff's Department*

**ADA NOTICE**

Pursuant to the Americans with Disabilities Act (ADA), the County of Los Angeles Department of Parks and Recreation has designated an ADA Coordinator to carry out this Department's compliance with the non-discriminatory provisions of the ADA. For more information, you may contact the ADA Coordinator's Office, Tel. (213) 738-2970 TDD (213) 427-6118 Fax (213) 487-0380. Upon 3-day request notice, sign language interpreters and related materials in alternative formats (Braille-transcript, large print, audio-record, video-captioning, live description) or other reasonable accommodations are available to the public for County-sponsored activities and events.

Riding conditions: Combination of rolling hills, some semi-steep hills, pavement and street crossings and level areas. the ride will be approximately 3.5 hours with 2 rest stops.

NON-RIDERS ARE WELCOME | RIDERS UNDER 18 MUST BE ACCOMPANIED BY AN ADULT | NO STALLIONS OR DOGS, PLEASE | NO DOUBLE RIDING

**CASTAIC LAKE STATE RECREATION AREA: 32132 Castaic Lake Drive, Castaic, CA 91384**

TWO THOUSAND ELEVEN RESERVATION FORM  
**ANTONOVICH**  
*Trail Riders Ride*

PLEASE MAKE CHECKS PAYABLE TO:  
 County of Los Angeles Department of Parks & Recreation  
 MAIL RESERVATION FORM & PAYMENT TO:  
 Supervisor's Trail Ride, Department of Parks & Recreation,  
 120 E. Via Verde Road, San Dimas, CA 91773  
 FOR INFORMATION CALL: Vincent Pedroza (909) 599-8411

**PRE-REGISTRATION IS A MUST. RESERVATION DEADLINE BY FRIDAY, APRIL 29, 2011**

Name:	Phone: ( )
Address:	City:
Number of Trail Ride Tickets @ \$30.00 Per Person:	
Number of Riders:	Number of Non Riders:
Total Enclosed:	





**MICHAEL D. ANTONOVICH**  
**LOS ANGELES COUNTY MAYOR**

*Invites You*  
*to the 14<sup>TH</sup> Annual Veterans' Event*



# REMEMBERING OUR VETERANS & THEIR FAMILIES, PAST, PRESENT AND FUTURE

**SATURDAY, MAY 28, 2011 - 10 A.M. TO 3 P.M.**

**ARCADIA COUNTY PARK**  
**405 S. SANTA ANITA AVENUE, ARCADIA 91006**

FEATURING

- SKYDIVERS
- FLYOVER BY WWII FIGHTER PLANES
- FOOD BOOTHS
- LIVE MUSIC

NO COST

- IMMUNIZATIONS
- HAIRCUTS/MANICURES
- HEALTH SCREENINGS

ASSISTANCE

- EMPLOYMENT INFORMATION
- VETERANS BENEFIT INFORMATION
- LEGAL INFORMATION

A SPECIAL TRIBUTE TO OUR ARMED FORCES  
WILL BE HELD AT 11:30 A.M.

BRING A DUPLICATE OF A MILITARY PHOTO  
TO BE PLACED ON  
THE "WALL OF REMEMBRANCE"

FREE ADMISSION

EVENT WILL BE HELD RAIN OR SHINE

FOR MORE INFORMATION  
CALL 626-967-1441 OR 909-394-2264.



Community & Senior Services  
Adult Protective Services  
HOT LINE: (877) 477-3646

# Los Angeles County Employees: Going Above and Beyond to Give Back

Enriching lives through effective and caring service is the mission of the County of Los Angeles Workplace Giving Program. Every day, County employees see individuals and families struggling to make ends meet. While it's their duty to provide services to the community, it's their passion to go above and beyond their jobs.

Los Angeles County, with over 100,000 positions, is the largest employer in the region, with jobs ranging from scuba diver to helicopter pilot. United Way and its partners are proud to work with County employees during Cesar Chavez Community Service Week and year-round.

Together, United Way and Los Angeles County are striving to make a difference in our communities by collaborating around critical issues such as homelessness. They have been a consistent winner of the Spirit of LA award for over a decade and continue to create pathways out of poverty.



"Our employees are proud to be United Way's number one fundraiser in the public sector, raising \$760,000 for United Way's *Creating Pathways Out of Poverty* plan."

—Ellen Sandt, Deputy Chief Executive Officer, Operations Cluster  
L.A. County Employees



**GIVE. ADVOCATE. VOLUNTEER.**  
UnitedWayLA.org

**LIVE UNITED.**  **TO CREATE PATHWAYS OUT OF POVERTY**

## Students Reduce Waste on Campus

Students and teachers from five local schools were recently recognized by the Los Angeles County Board of Supervisors for helping reduce waste on their school campuses by diverting about 73,780 pounds of waste from landfills.

The 2010 Battle of the Schools competition experienced the largest number of contestants with 14,000 students from 56 schools participating in the contest.

The annual competition is part of Generation Earth, an environmental program managed by the Los Angeles County Public Works Department. Generation Earth provides students an opportunity to take an active role in solving environmental problems and encourages them to be stewards of the environment now and in the future.

The Battle of the Schools competition is open to all middle and high school students. During the competition, participating schools must conduct a waste audit, analyze the impact of pollution on their school campus, and implement source reduction techniques such as recycling.



The school that diverted the most waste from each Supervisorial District over a three-month period received the prestigious award during a recent Board of Supervisors meeting. This year's recipients were:

- El Rancho High School, District 1
- Jefferson High School, District 2
- Paul Revere Charter Middle School, District 3
- Hughes Middle School, District 4
- Luther Burbank Middle School, District 5

Generation Earth is funded by the LA County Public Works Department. To learn more about the program, visit [www.generationearth.com](http://www.generationearth.com).



## American Red Cross Japan Earthquake and Pacific Tsunami Fund



The Board of Supervisors are encouraging County residents and employees who wish to make a monetary contribution to earthquake victims in Japan to do so through the American Red Cross Japan Earthquake and Pacific Tsunami Fund. Financial contributions can be made via telephone, by mail, or online by contacting the Red Cross at [www.redcross.org](http://www.redcross.org) or by calling (800) RED-CROSS.



*Pictured above are Los Angeles County Fire Department's Urban Search and Rescue Team, California Task Force 2 in Japan searching for survivors following the 9.0 magnitude earthquake and subsequent Tsunami.*

### Household Battery Collection Program is AAA Positive

Since its implementation in 2008, the Los Angeles County Household Battery Collection Program has collected over 55,000 pounds of batteries.

State regulations prohibit universal waste such as household batteries from being disposed of in landfills because they contain corrosive chemicals considered hazardous to the environment. In an effort to educate and encourage residents to properly dispose of their household batteries, County Public Works partnered with the County Public Library to utilize library locations for the proper collection of household batteries.

Initially, collection tubes for household batteries were placed at 10 library locations and at County Public Library headquarters. Several cities also joined the program by placing collection containers at various facilities, affording their residents additional convenience to dispose of household batteries in a safe and proper manner.

After a very successful launch with over 16,000 pounds of batteries collected, the program was expanded in July 2010 to include five more library locations. The program's success was due in part to a proactive public outreach component. Information about the program was distributed to all participating library locations, at outreach events, and on the Public Works environmental programs website.

To find out more about the program and designated collection locations, please visit [www.CleanLA.com](http://www.CleanLA.com) or call 1 (888) CLEAN LA.

### County Motor Oil Collection Events

Did you know that just one gallon of motor oil can contaminate one million gallons of fresh water? . . . That's a year's supply of water for 50 people.

But fear not, there's a solution. The Los Angeles County Public Works Department is hosting countywide oil collection events.



Residents are invited to recycle used motor oil and oil filters at one of the collection events listed below.

- 5/14/11                      Lennox Collection Event  
10322 Condon Avenue, Lennox 90304  
9 a.m. – 1 p.m.
  
- 5/21/11                      San Gabriel O'Reilly Filter Exchange Event  
East Las Tunas Drive, San Gabriel 91776  
10 a.m. – 2 p.m.

For additional information about the program, call 1 (888) CLEAN LA or visit [www.CleanLA.com](http://www.CleanLA.com) for information on upcoming events.

---

## The County of Los Angeles Commuter Benefit Plan

If you are one of the thousands of environmentally conscious County employees that vanpools or makes use of the mass-transit commuting services to get to and from work, you are probably already experiencing the cost benefits of commuting by saving on the cost of gas. But, did you know that you may be able to save more money by participating in the Commuter Benefit Plan?

The Commuter Benefit Plan, or CBP for short, has gained popularity since its launch a year ago; especially now that everyone is going “green.”

How does the CBP save you money? Besides the CBP being a great way to support the County’s *green* initiative, it allows participants save money by using pre-tax dollars up to the current IRS pre-tax limit of up to \$230 per month to pay for eligible transportation expenses, such as public transit passes, Metrolink passes, TAP cards, and Vanpools. Because the deductions are taken pre-tax, you save by not having to pay State and Federal taxes on any amount up to the \$230

---

## Single-use Plastic Carryout Bags Ban Approved

Single-use plastic carryout bags will soon be a thing of the past in unincorporated Los Angeles County following the Board of Supervisors’ recent decision to ban the bags at all supermarkets, grocery stores, convenience stores, pharmacies and drug stores.

The ban, which takes effect on July 1, 2011 at large supermarkets and pharmacies and at all other stores by January 1, 2012, has been hailed as an “historic achievement” for the County that would provide substantial environmental improvements for the future.

The Board also voted to ban the use of single-use plastic bags at County facilities and offices, County-managed concessions and by commercial food and beverage suppliers at County-permitted events and County-sponsored events. In addition, stores that provide single-use recyclable paper carryout bags will be required to charge ten cents per bag.

The Board also directed that reusable bags must comply with all state and federal restrictions on permissible levels of lead and other materials, including cadmium.

The ban follows the completion of an Environmental Impact Report (EIR) conducted earlier this year to assess the environmental effects of adopting a plastic bag ban. The EIR concluded that imposing a ban on plastic carryout bags would substantially reduce litter, protect wildlife and marine habitat and improve quality of life throughout Los Angeles County.

Public Works Deputy Director Massood Eftekhari said that with the Board decision, Los Angeles County became the country’s largest municipality to enact such legislation, as well as a national leader in the movement to promote the use of reusable bags.

“Los Angeles County has long been at the forefront of environmental protection and yet more than six billion single-use plastic bags are used each year in L.A. County alone,” Eftekhari said. “We spend over \$18 million annually to clean up and prevent the litter and environmental hazards they create.”





limit. You will also enjoy the convenience of paying for transit expenses through monthly payroll deductions on your 30<sup>th</sup> of the month paycheck. Transit expenses that exceed the IRS limit are deducted from your paycheck on an after-tax basis.

If you're an infrequent commuter, you may save money through the CBP by purchasing a Pre-Paid Commuter Check Card. These cards are flexible and you choose the amount you want deducted from your paycheck each month, up to \$700. The CBP's Pre-Paid Commuter Check Card works similar to a debit card: The amount deducted from your 30<sup>th</sup> of the month paycheck is loaded onto your Check Card two months after the deduction. Once the funds are available, you can use your Check Card to purchase transit passes, daily metro passes, or to purchase other eligible transportation expenses.

For more information, please visit to the Department of Human Resources' website at <http://dhr.mylacounty.info> or go directly to [www.myfbmc.com](http://www.myfbmc.com) to enroll in the Commuter Benefit Plan. Don't have access to a computer? No problem, call 1-800-342-8017 and a friendly customer service representative can answer questions and help you enroll.



“The ban will ensure that our mission to preserve natural resources, reduce litter and protect our beaches and waterways for our 10 million residents will continue to be met,” he added.

Advocates of a single-use plastic bag ban include municipalities, business organizations and environmental groups. Following the Board's adoption of the EIR, it is now expected that several L.A. County municipalities will implement similar bans.

In April 2007, the Board unanimously adopted a resolution instructing the Chief Executive Office and the Public Works and Internal Services Departments to investigate plastic and paper bag consumption in the County and the possible development of a policy similar to that of San Francisco.

In response to this action, a County working group comprising representatives of the CEO, Public Works, Internal Services, Public Health, and County Sanitation Districts, as well as key stakeholders including large supermarkets and retail stores, the plastic bag industry, environmental organizations and recyclers, developed a number of alternatives for the Board's consideration.

The following year, the Board adopted a voluntary program to encourage consumers to switch from single use plastic bags to reusable bags. Although the program, which included the 'Brag About Your Bag' campaign, was successful in raising public awareness about the importance of switching to reusable bags, it was not enough to significantly reduce plastic bag usage and lessen the negative environmental effects of plastic bags.

Following the recent adoption of the new ordinance, County Public Works moved swiftly to create a website, [www.aboutthebag.com](http://www.aboutthebag.com), to educate County residents about the ban and show civic leaders in other communities how to develop their own ban ordinances.

Public Works has also partnered with the LA County Library to make free reusable bags available to County residents through promotions at branch libraries and the summer reading program.

Public Works has already given away more than 60,000 reusable bags and will make an additional 40,000 bags available free to residents through various County-sponsored events over the next six months.

For more information on the ban, visit [www.aboutthebag.com](http://www.aboutthebag.com).

## “Women’s Voices, Women’s Accomplishments”

On March 14, the Los Angeles County Commission for Women held their 26th annual “Women of the Year” award luncheon. In celebration of Women’s History Month, the Commission commemorated “Women’s Voices, Women’s Accomplishments.”

President Becerra-Jones and Committee Chair McCarthy Napoleon were gracious hosts as the delightful and witty Asha Blake presented the program with seamless perfection.

The audience stood hushed as the invocation was given by Katherine Russell Enright and the Los Angeles County Fire Department presented the Flags and Colors of the County. The Marlborough School Chamber Choir sang the National Anthem and gave a moving rendition of “Lean on Me.”

The event acknowledged the hard work and dedication of the honorees whose invaluable service and advocacy bring about

social economic change to further women’s equality and serve as role models for them.

The Commission utilizes funds from this event to provide girls-at-risk with educational scholarships who otherwise would not be able to afford college and/or vocational programs. Kimberly Franklin, Natasha Adamski and Nayelli Araiza were three of the 21 girls who were bestowed scholarships this year.

The Commission for Women would like to give special thanks to the Board of Supervisors, their corporate sponsors and other sponsors and attendees for their generous and continued support.

Corporate sponsors included: QueensCare, Farmers Insurance, President Becerra-Jones, Kaiser Permanente, Marlborough School, CA Endowment, LA World Airports, Mattel Inc., and Committee Chair Julie Napoleon McCarthy.

## Mayor Michael D. Antonovich Recognizes Department of Parks and Recreation for Earning LEED-EB Certification for Placerita Canyon Nature Center from the U.S. Green Building Council

The Los Angeles County Placerita Canyon Nature Center and Natural Area was recognized by Mayor Michael D. Antonovich and the Board of Supervisors for its achievement of being the first Los Angeles County facility to earn a Leadership in Energy and Environmental Design – Existing Building (LEED-EB), Silver-Rated Certification by the U.S. Green Building Council. The Nature Center received its LEED-EB Certification in August 2010, marking unprecedented achievements in design and development of environmentally responsible facilities, services and programs.



Placerita Nature Center building was originally constructed in 1971 with renovations that include accessibility upgrades in compliance with current ADA requirements, a new gift shop; energy and water conservation features including energy efficient air conditioning and cooling systems, exterior building wall insulations, new roofs, renovated restrooms, windows and doors, septic system/leach field, court yard, and interior remodeling. The Natural area improvements include a new roof at Walker Cabin and exterior restorations; new potable water system at Walker Ranch Campground; pedestrian bridge, ADA accessibility and structural restorations.

Department of Parks and Recreation Director Russ Guiney (*pictured above*) accepted a Board scroll along with other Parks and Recreation employees and representatives from the Department of Public Works, Pugh & Scarpa Architects and the Placerita Nature Center Associates.

## Vasquez Rocks Natural Area Park

The dramatic geological formations of Vasquez Rocks Natural Area Park in Agua Dulce draw 105,000 visitors each year, as well as film, television and video shoots. Now the 932-acre Los Angeles County park is about to get an interpretive center. As befits its breathtaking surroundings, it will be entirely “green.” The center will be designed to meet LEED (Leadership in Energy & Environmental Design) platinum certification standards. Scheduled to be completed in 2011, it will accommodate activities relating to the park’s prehistoric cultural resources, geologic artifacts and Native American sites.



## Los Angeles County Fire Stations are “Safe Houses” for Kids

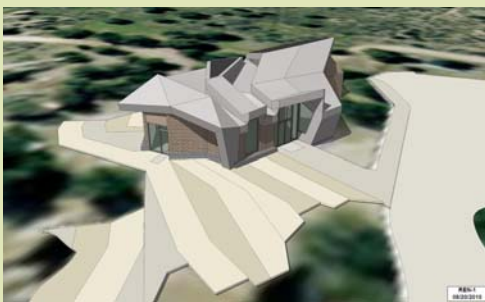
As part of Los Angeles County’s declaration of March 21-26, 2011 as “Safe Communities Week,” the Los Angeles County Fire Department would like to remind the public that all fire stations in Los Angeles County are “safe houses” for any child in a threatening situation.

The “Safe House Program” was initially launched by the Los Angeles County Fire Department in 1997 and was eventually adopted by all other municipalities within the County through the support of the Los Angeles Area Fire Chiefs Association. This community-based program designates each fire station as a “safe house” to ensure a temporary haven for any child who encounters a threatening situation and needs a safe place to go.

“Firefighters actively participate in the program whenever a child appears at a fire station in a threatening situation,” says Fire Chief Daryl L. Osby. “They temporarily place the crew and emergency vehicles out of service in order to help. They reassure the frightened child and assist with any medical emergencies. Most importantly, firefighters report any crimes to law enforcement officials and provide descriptions of vehicles and suspects when possible.”

**SAFE HOUSES**  
continued on page 12

The center’s artwork will be “green,” as well. Artist team—Didier Hess, comprised of Jenna Didier and Oliver Hess, has been commissioned to create art for the center’s entry walkway and main entrance courtyard through the County’s Civic Art Program. Under the program, one percent of construction costs of all County capital projects over \$500,000 is set aside for the incorporation of civic art. The Los Angeles County Arts Commission selected Didier and Hess because of their commitment to sustainability and use of sustainable materials.



They operate a non-profit research center in Los Angeles that is an outdoor exhibition space, experimental lab and community hub for the interface between architecture, art and public space.

Didier’s work has involved integrating rainwater catchment technologies and on-site storm water management into water features and the landscape.

On a sunny day in January, they visited Vasquez Rocks, formed 25 to 30 million years ago from a massive buckling and splintering of the earth’s crust. As the artists stood in front of the most often photographed formation, Hess recalled first seeing the rocks in an episode of *Star Trek* when he was six. He was impressed. “What we see now is only a small part of time,” he mused. In her work, Didier has seen “the way nature responds to create a solution. You have to tap into those sources and energy flows [in creating the work].” To find out more about the Vasquez Rocks project, contact [civicart@arts.lacounty.gov](mailto:civicart@arts.lacounty.gov).

## Civic Park Project Update

The new Civic Park, with its majestic views extending from the Music Center to City Hall, will provide Angelenos of all walks of life a place where they can come together to celebrate, reflect, and shape the future, in one central gathering place. The Civic Park Project is part of the overall Grand Avenue Project which has been delayed due to the economic downturn. Below are highlights of the Civic Park Project with regards to the first five months of construction. To view details of the Civic Park Project, visit [www.civicpark.lacounty.gov](http://www.civicpark.lacounty.gov).

### Ongoing:

- Demolition and construction at the Court of Flags
- Continuation of caisson work for the new ramp and Park Support Building south of the Foltz Courthouse
- Demolition of planters, walls, and pathways
- Grading and excavation
- Waterproofing installation
- Installation of new concrete support walls for the ramps and new terrace area
- Construction of the Fountain pump room
- Reconstruction of the Grand Avenue Ramps
- Installation of exterior framing for the new Starbucks building
- Construction of architectural concrete retaining walls, stairs and planters

### Upcoming:

- Opening of the new Starbucks building – Winter 2011
- Opening of the Grand Avenue Ramps – Winter 2011
- Civic Park Completion – Summer 2012

\*The existing Starbucks is open during construction. Access to Starbucks remains through the Courthouse or up the South escalator from Upper Lot 18.

---

## SAFE HOUSES

*continued from page 11*

Safe House incidents are considered to be “still alarm” responses, meaning that the person needing assistance either walks into the fire station or the fire crew encounters someone in help while out of the station on emergency or non-emergency business. All Safe House incidents are considered to be emergency medical calls and are reported to the Department’s command and control facility, and assigned an incident number. The jurisdictional law enforcement agency is contacted, as well as the 24-hour Child Abuse Hotline.

The Safe House Program’s core mission is to assist children who are in immediate fear of becoming victims of any crime, intimidation or abuse. In this way, firefighters actively support their daily mission to save life and property.

“This program demonstrates the willingness of Los Angeles area fire service agencies to accept a shared responsibility for the well being of children living in each of the County’s many communities,” says Osby. “Together with school districts, police departments, parents, and community members, the Safe House Program has been built to ensure safe communities for our children one neighborhood at a time.”

For more information, call the Los Angeles County Fire Public Information Office at (323) 881-2411.

## Simple Steps Can Cut the Clutter – Tips from Consumer Affairs

The phone rings right at dinner time. Important mail gets lost in a sea of junk. You can’t check email without sifting through spam. You could wallpaper the kitchen with all of those credit-card offers. YOU’RE APPROVED!! (...and now annoyed) Tired of receiving those pre-approved credit card offers in the mail? You can “Opt-out” by calling toll-free: (888)-5-OPTOUT (888-567-8688). You can also register online at [www.optoutprescreen.com](http://www.optoutprescreen.com). This service is operated by the major credit reporting agencies.

It’s hard to stay organized. It’s almost impossible when there’s so much clutter.

In the spirit of spring cleaning, the Department of Consumer Affairs suggests you follow a few simple tips and help keep extra clutter out of your life.

### **The Do Not Call List**

“You have won an all-expenses-paid trip to Hawaii! Just give us your Social Security Number for verification.”

“Please donate to the Injured American Heroes Fund. Just give us a credit card number.”

Fraudulent telemarketers will try to sell you anything – investments, credit cards, vacation packages. Or they will ask for donations to phony charities. They’ll call all day and night. In turn, they steal over a billion dollars from consumers every year. If you don’t want calls from telemarketers, you can register your phone number (including cell phones) on the National Do Not Call List at [www.donotcall.gov](http://www.donotcall.gov). You can also call toll free (888) 382-1222.

The Do Not Call list is operated by the Federal Trade Commission (FTC). Registration is effective within 30 days and does not expire. Telemarketers should not call you after you have been registered for 31 days. For more information, see our Consumer Affairs tip-sheet on telemarketers at [www.dca.lacounty.gov](http://www.dca.lacounty.gov) and click on consumers/more topics and our [article](#) about charities fraud.



## County Public Works and Sheriff's Partner for Sharps Disposal

The Los Angeles County Sheriff's and Public Works Departments have joined forces to enhance disposal opportunities for home-generated sharps waste. The creative partnership was established earlier this year to provide all County residents a more convenient and safer means to dispose of their used or unwanted syringes, medical devices and controlled substances.

Following the enactment in 2008 of SB 1305 that formally prohibited the disposal of home-generated sharps in the trash, Public Works established the Home Generated Sharps Waste Management Program, which provides free sharps containers to County residents as well as designated drop-off locations for sharps waste at clinics and other venues.

In September 2009, the Sheriff's Department expanded sharps collection under its Safe Drug Drop-Off Program that allows residents to safely and anonymously dispose of expired or unused drugs, sharps, waste and other controlled substances at local Sheriff's stations.

Since the establishment of the Public Works/Sheriff's partnership, sharps collection has been expanded to provide more locations, and bigger and safer drop-off boxes at Sheriff's stations, thus making sharps waste management easier and more accessible.



The County of Los Angeles continues to support producer responsibility bills to shift the management of home-generated sharps waste to manufacturers. In the meantime, Public Works is continuing to work on developing additional opportunities to make home-generated sharps management more convenient for residents Countywide.

### **Junk mail list**

Sure, it might come in handy if you need a carpet cleaned or 50 cents off a combo platter at that new restaurant. But mostly, junk mail just leaves mess. It fills up mailboxes, then dining-room tables, then trash cans. It makes day-to-day organization more difficult.

But you don't have to put up with all of it.

Many of the companies who send you advertising in the mail are members of the Direct Marketing Association (DMA). You can register with them to be removed from their member's mailing lists. You can register by mail or online at [www.dmachoice.org](http://www.dmachoice.org) for a \$1 charge. By mail, write a letter or print their form. Be sure to include your name, address and signature. Send to:

DMA Choice  
Direct Marketing Association  
PO Box 643  
Carmel, NY 10512

The deceased are protected, too. The DMA also has a Deceased Do Not Contact List, which all DMA members are required to honor. Register your deceased loved one at [www.ims-dm.com](http://www.ims-dm.com) for a \$1 fee. For more information, check out our Consumer Affairs tip-sheet on stopping junk mail at [www.dca.lacounty.gov](http://www.dca.lacounty.gov) and click on consumers/more topics.

### **Spam**

If you use email at home, you certainly have to deal with those unwanted messages in your inbox. Spam can come in many disguises. It could claim you won a foreign lottery, or can share in an overseas inheritance. Maybe it's a money-making scheme or an illegal seller of medicines.

A simple rule: if you don't know who sent an email message, don't open it. The FTC gives you the chance to go one step further. It works like this. If you get spam email that you think is deceptive, forward it to [spam@uce.gov](mailto:spam@uce.gov). The FTC uses the spam stored in this database to pursue law-enforcement actions against people who send deceptive email. The Department of Consumer Affairs can help you with your consumer needs and questions. Check out our website at [dca.lacounty.gov](http://dca.lacounty.gov) or call (800) 593-8222.

---

# Retirees

*Congratulations to the following employees who are joining the ranks of the retired after their service to the residents of Los Angeles County:*

## 45+ Years:

**PARKS AND RECREATION:** Larry C. Lee  
**PUBLIC SOCIAL SERVICES:** Betty F. Robinson, Ramona St. Cyr

## 40+ Years:

**ASSESSOR:** Linda C. Castro  
**CHIEF EXECUTIVE OFFICE:** Sheri A. Pierce  
**CHILDREN AND FAMILY SERVICES:** Dianne Bean, Jacquelyn E. Hall, Marcia G. Hams, Pamela L. Jacobian  
**CORONER:** Emily C. Leon  
**FIRE:** Rickey D. Williams  
**HUMAN RESOURCES:** Katherine Campos  
**INTERNAL SERVICES:** Douglas M. Benjamin, Brian D. Biloki  
**PARKS AND RECREATION:** Larry C. Lee, Rodney M. Wallace  
**PROBATION:** Charlotte A. Bailey, Norma J. Blackburn, Michele Butler-Alleg  
**PUBLIC DEFENDER:** Joanne McNabb  
**PUBLIC LIBRARY:** Teresa P. Crivello  
**PUBLIC SOCIAL SERVICES:** Hilda Bermejo, Sandra Duran, Josephine McFadden, Betty F. Robinson, Melinda A. Swim, Joyce M. Ward, Shirley M. Weller  
**PUBLIC WORKS:** Horace Cates Jr.  
**SHERIFF:** Ellen K. Noennick, Sidney Scypion Jr.  
**SUPERIOR COURT:** Arthur Acevedo

## 30+ Years:

**AFFIRMATIVE ACTION:** Hayward Harris Jr.  
**ALTERNATE PUBLIC DEFENDER:** Cynthia I. Marcotte  
**ASSESSOR:** James H. Bell, Barry J. Bosscher, Janice Bryant, Steven Chin, George M. Gallardo, Rosemarie E. Graffius, Jacqueline C. Lee, Beatrice E. Nevarez, Shirley Toy  
**AUDITOR-CONTROLLER:** Dianne L. Nelson, Maria M. Oms  
**BEACHES AND HARBORS:** Dorothy E. Crane, Larry Triplett  
**CHIEF EXECUTIVE OFFICE:** Elena F. Estrin  
**CHILDREN AND FAMILY SERVICES:** Claire T. Chih, Pedro V. Gan, James Perkins, Joi J. Russell, Diane M. Teel  
**COUNTY COUNSEL:** Thomas M. Tyrrell  
**DISTRICT ATTORNEY:** Norma Burciaga, Christine Gomez, Mary D. Gonzalez, John F. Lynch, Clayburn H. Peters, Jane M. Rihn, Jo Anee Sanchez, Lisa G. Scott, Ada Sherow, William E. Smith Jr., Jean Watt, Diana Yee  
**FIRE:** Bruce D. Arvizu, Christine Aleman, Daniel S. Atkins, Esperanza V. Bango, John De Leon Jr., Caren M. Elliott, Miguel Garcia, Hortencia G. Gonzales, Terence Hearst, Van Mark Madrigal, Lynn A. Mohr, Thomas J. Norton, Hugh S. Powell, Joe P. Sotro Jr., Nicholas G. Torres, Eiji Watanabe  
**HUMAN RESOURCES:** Nick Apeles  
**INTERNAL SERVICES:** Mary L. Catt, Nicolas Curtis, Thearthur Duncan, Loretta L. Ferrell, Lisa C. Filler, Veronica A. Go, Linda E. Goo, David Mayer, Ada S. Mok, Martin Ortiz, Richard L. Pauwels, Geldelita U. Retuta, Carlos Rivera, Phuc M. Tran, Tony T. Wan



**LACERA:** K Dawn Scott, Robert E. Whitten

**MENTAL HEALTH:** Dorothy H. Jackson, Alice James, Leonids Jurkevics, Rosita Nacario, Ollie B. Price, Tanya M. Robledo, Donald Wells, Maria R. Williams

**PARKS AND RECREATION:** Gloria A. Belmontes, Robert Welch

**PROBATION:** Christine T. Alexander, Paula T. Alvarez, Bobby J. Boisdore, Louise C. Carrillo, Jean M. Genera, Cleo Mason, Mina Navarette, Anthony Smith, Jerome D. Spurlin Jr., Louis C. Starr, Beverly M. Welch, Michael A. Williams

**PUBLIC DEFENDER:** Rommel Agee, Geraldine Jones

**PUBLIC HEALTH:** Jaime R. Banuelos, Claudia A. Encinas, Sotera Fabros, Gary Henderson, Iris Johnson, Alfonso Medina, Sharon A. Trucker, Robert Wilson

**PUBLIC LIBRARY:** Donna J. Banos, Linda Thomas

**PUBLIC SOCIAL SERVICES:** Maria A. Avelar, Jimmie Broadway, Alma A. Cabral, Dolores A. Chavez, Chun Y. Chow, Fany Khiev, Shirley M. Macey, Brenda B. McCoy, Violet F. Pollard, Ronald A. Price, David Quintanilla, Roberta M. Richey, Mike R. Rojo, Alicia M. Sanchez, Betty F. Sanders, Sandra L. Smith, Yvette Tadeo, Jessie Tapia, Betty J. Toussaint, Sandra Ulwelling

**PUBLIC WORKS:** Rosamaria C. Alvarez-Ruiz, Alexander Stephens

**REGISTRAR-RECORDER/ COUNTY CLERK:** Magdalena B. Claudio

**SHERIFF:** Enrique Acevedo, Gregory L. Adams, Jose G. Avila, Arlene J. Berner, Donald L. Bluntach, Jaime C. Buenaventura, Henry B. Burciaga, Camilo Casillas Jr., Dale K. Chandler, Edison M. Cook Jr., David S. Cooper Jr., Michael W. Dunkle, Treasure B. Engleton, Mario Estrada, Rafael Estrada, Dennis M. Flinn, Eric S. Giambalvo, Gary J. Gray, Gary A. Griffith, Michael J. Gimaldi, Jerry R. Hankerson, Roxanna L. Hart, Thomas K. Henry, Victoria G. Hwang, John M. Knight, Tanya C. Ladd, Teresa Y. Leung, Rogelio Levario, Jean Loo, Jessie M. Martinez, Stephen J. Maroun, Joseph J. Maxey, Mitchell T. McMahon, Ronald D. Melton, Cynthia M. Meza, Ruben Montanez, David A. Nell, Leo M. Norton, Earl L. Otoide, Gary J. Parker, Rodney I. Penner, Randy D. Perry, Julio Raya, Patricia L. Reyes, Patrick A. Rissler, Jose L. Romero, Robert J. Salas, Dixie J. Sanders, Anthony J. Velasco, Keith C. Walker, Teri L. Wilhelm, Marc S. Wolf, Cecelia M. Wright, Elaine K. Young-Wong, Louis P. Zavala

**SUPERIOR COURT:** Roobina Badalian, Donna Bennett, Carol H. Mattingly-Al, Olga L. Navarro, Alfred J. Padilla, Gerald T. Regalado, Diane E. Robinson, Agustin M. Salcido, Jose L. Tellez, Gloria West, Michael White, Susan Zuckerman

## 25+ Years:

**ASSESSOR:** Adel Girgis

**CHILDREN AND FAMILY SERVICES:** Karen Bass, Mercy A. Beniabon, Willie J. Bircher, Lae I. Lee, Faye E Washington

**COUNTY COUNSEL:** Andrew W. Owens

**DISTRICT ATTORNEY:** James E. Brown, Andrew J. McMullen, Michael W. Rice, Thomas C. Robinson, Patricia R. Tucker

**FIRE:** Steven K. Christensen, Jon S. Christie, Timothy G. Cremins, David H. Estopinal, Thomas Gray, Lee M. Gregory, Michael R. Markillie, David P. Petersen, Dennis R. Schaffer, Kerry D. Yim

**INTERNAL SERVICES:** Garry S. Costigane, Douglas Locklair, Robert L. Santoyo

**MENTAL HEALTH:** Vonalie R. Bennett, John D. Griffin, Theresa Nguyen, Albertina Kurniawan, William J. Peck

**PARKS AND RECREATION:** Arthur Jones, Kathleen A. Ritner

**PROBATION:** Elizabeth Becker, Terry M. Cardenas, Herman R. Rankins

**PUBLIC DEFENDER:** Lupe M. Oronoz-Crawford

**PUBLIC HEALTH:** Evelyn V. Amalu, Enrique T. DeGuzman, Suzanne Gero, Cameron Mathouchan, Yvonne R. Sannes

**PUBLIC LIBRARY:** Annette M. Gade

**PUBLIC SOCIAL SERVICES:** Rose M. Gayton, Amalia Gonzalez, Maria C. Gonzalez, Otilia H. Guadiana, Willie P. Rawls, Bernice I. Westberry

**PUBLIC WORKS:** Robert R. Fetty, Joe B Garcia, Chitra R. Munaweera, Barbara A. Salas, Earl Williams

**REGISTRAR-RECORDER/ COUNTY CLERK:** Josefina I. Lacanilao, Jackie Lim

**SHERIFF:** Florence Allen, Axel H. Anderson, William D. Axelrod, Craig W. Berning, David S. Bower, Kim G. Braden, Sandra M. Brown, John A. Coffeen, Patrick R. Cooper, Renee L. Dibb, William D. Dinwiddie, Richard M. Erickson, Randy L. Garland, Charlotte A. Green, Arthur L. Gutierrez, Laura L. Gutierrez, Edward A. Hemler, Randy J. Holbrook, Michael D. Holmes, Herbert E. Howland, Dorothy F. Lino, Alexander H. MacArthur, William E. Martin, George Martinez, Polachira I. Mathai, Jack W. McClive, James E. Pennington, Stephen M. Peters, Donald P. Pollaro, Mark F. Relyea, John M. Rodriguez, Manuel A. Rodriguez, Joseph P. Ruggiero Jr., Victor J. Rugnetta, Carol K. Sams, Susan L. Smith, Arthur U. Solis, Michael D. Soop, Mark J. Stevens, Curtis R. Uyeda, Jesus M. Vargas, Michael J. Westfall, Tyrrell G. White, Raymond Yliz, Randy L. Zaiz

**SUPERIOR COURT:** Martin L. Goetsch, Su-Hsia Wang



# Share It



## **Rancho Los Amigos Named A 2011 *U.S. NEWS & WORLD REPORT* "Best Hospital"**



Rancho Los Amigos National Rehabilitation Center has been named to the 2011 *U.S. News & World Report* "America's Best Hospitals" list. The world-renowned facility ranked seventh out of the 138 hospitals ranked in Los Angeles and Orange Counties and was the only rehabilitation hospital listed.

Rancho, one of five hospitals in the Los Angeles County Department of Health Services family, has been ranked one of America's best hospitals for 21 consecutive years since the inception of the *U.S. News & World Report* survey in 1990. It is the only County operated hospital to appear in the top ten.

"This ranking is a testament to the incredible and innovative work that Rancho does with their patients," said Supervisor Don Knabe. "Rancho is at the head of the class in rehabilitative innovation, incorporating technology and art for both physical and emotional rehab. Through art, sports and other creative and active outlets, Rancho helps patients not only overcome their physical challenges, but also gives them the confidence to move into self-sufficiency. The credit goes to each and every Rancho team member for the effort they put forth each day to give patients world-class care. I am so proud of Rancho for this well deserved honor."

"This is a tremendous honor for Rancho, and represents a recognition of the outstanding quality of care we provide for our patients, as well as our status as a leader in Rehabilitation Medicine locally, nationally and internationally," said Rancho Chief Executive Officer Jorge Orozco.

"I want to congratulate the entire Rancho family for this latest recognition of the hospital's excellence," said Dr. Mitchell Katz, Director of the Los Angeles County Department of Health Services. "It underscores the quality of care that is being achieved for our patients within the DHS system every day."

The U.S. News ranking differs from other rankings by looking at how well a hospital handles complex and demanding situations and involves surveys completed by 10,000 physicians worldwide. A total of 4,852 hospitals were considered for this year's survey, but only 152 hospitals were ranked in one of 16 specialties including rehabilitation, cancer, heart and heart surgery, kidney disorders, urology, neurology and neurosurgery.

Scoring criteria included reputation, mortality index, patient safety, and care related factors such as nurse staffing, and available technology, however in the ophthalmology, psychiatry, rehabilitation and rheumatology specialties hospitals were ranked on reputation alone. Of the 152 hospitals ranked in one or more specialties, 14 qualified for Honor Roll by earning high scores in at least six specialties.

Rancho offers a full spectrum of both inpatient and outpatient rehabilitation services. The hospital has been a leader in advancing rehabilitation medicine for more than half a century, including the introduction of the first ever halo, used for neck injuries. Rancho serves an average daily inpatient population of 147 persons and experiences approximately 57,000 outpatient visits annually. The hospital is also renowned for its tradition of research leadership.